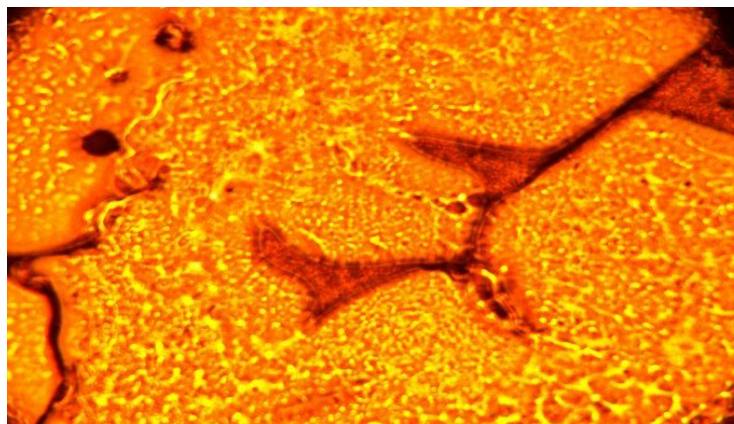




Hypoxyprobe, Inc.  
121 Middlesex Turnpike  
Burlington, MA 01803 USA  
[www.hypoxyprobe.com](http://www.hypoxyprobe.com)



*Cy7 Near Infrared dye linked anti pimonidazole mAb on hypoxic mouse lung tissue from a mouse treated with hypoxia marker pimonidazole HCl.*

## Hypoxyprobe™ CY 7 Antibody

(HPI Catalog # cy7)

- Description: Rat IgG<sub>1</sub> monoclonal antibody conjugated to CY 7 fluorophore (HP-CY 7).  
Specificity: Pimonidazole HCl forms adducts with thiol containing tissue proteins at  $pO_2 \leq 10$  mm Hg. HP-CY 7 binds to pimonidazole adducts in hypoxic cells in tissue and tissue culture.
- Format: Each vial of HP-CY 7 contains the antibody dissolved in 200 microliters of stabilized diluent at a concentration of approximately 0.5 mg/mL
- Product Type: Fluorophore conjugated IgG<sub>1</sub> rat monoclonal antibody (clone 11.23.22R)
- Fluorophore
- Protein Ratio:  $\geq 5$  molecules of CY 7 per rat IgG1 molecule.
- Fluorescence: Excitation 743 nm; Emission max 767 nm. This dye is invisible to the naked eye. It is a Near Infrared emitter and is used for in vivo applications.

### Product Details

- Applications: Flow cytometry and immunofluorescence on live cells or on live tissue sections. HP-CY 7 is designed as an alternative to FITC labeled anti-pimonidazole rat monoclonal antibody<sup>1</sup>. It serves its purpose well because Near Infrared detection can gather information several layers deep on the epidermis of living tissue by infusing or adding pimonidazole HCl and then applying the antibody to the surface of the cells. A dilution of 1/20-1/200 is suggested as a working guide only. It is recommended that users titrate the product for use in their system using appropriate negative and positive controls.
- Target Species: All species. This means that this product including the antibody can be used with any cell or tissue from plant or animal species as well as for human applications. Remember only pimonidazole HCl (non toxic) is to be introduced into the target. A biopsy is taken and the antibody is added to the biopsied tissue for staining or fluorescence measurements. The antibody product itself is for external use only.
- Product Form: Purified rat IgG<sub>1</sub> prepared by affinity chromatography
- Buffer: Proprietary formulation containing stabilizers.